

Legend

- ATV-UTV Routes Based on Municipal Ordinance
- ATV-UTV Trail (Cheese Country Trail)
- Local Roads
- County Roads
- State Highway
- Federal Highway
- Municipal Boundary
- Iowa County Boundary
- Other County Boundary
- // // Municipalities without approved ATV/UTV Routes



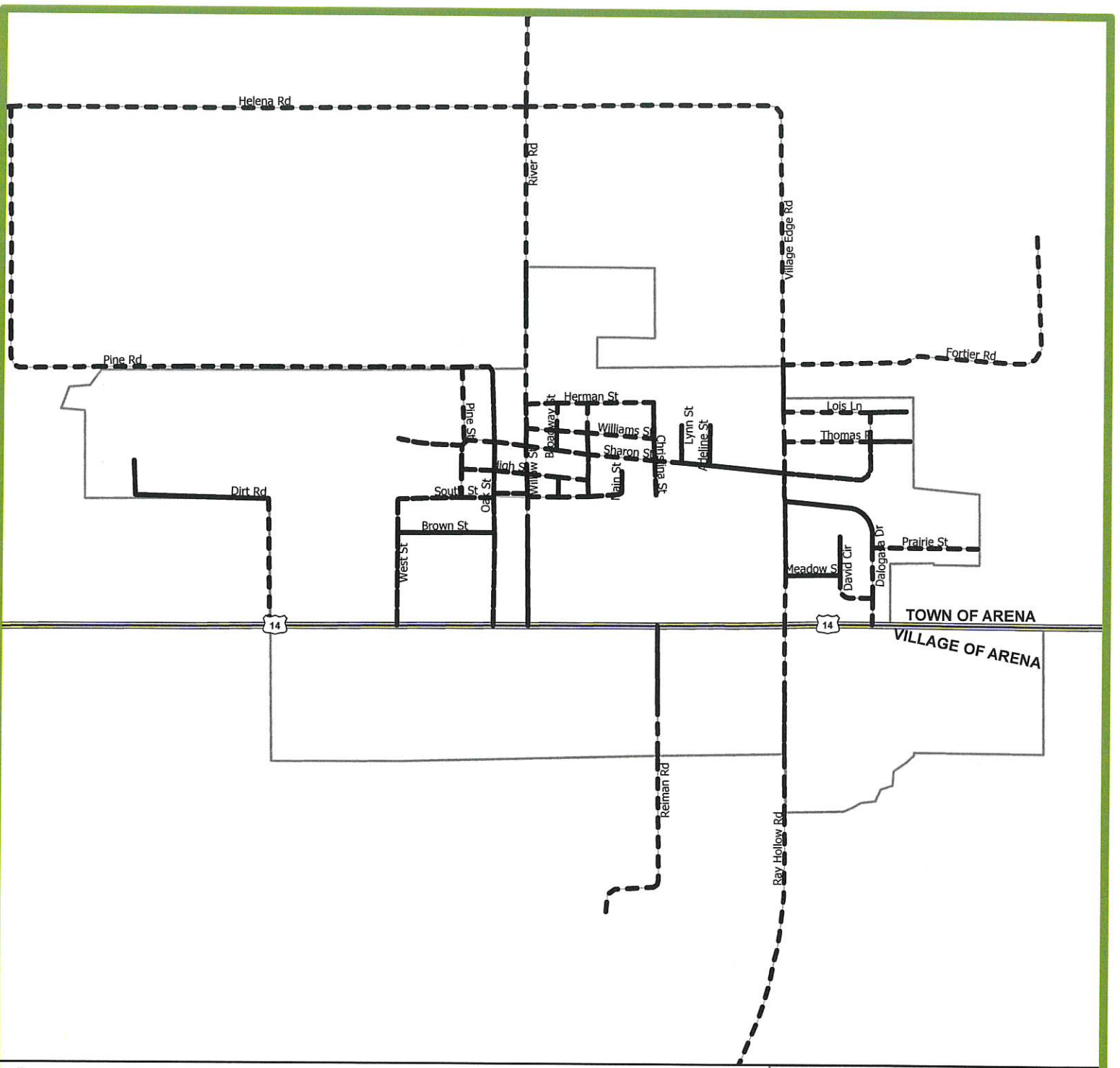
ALL-TERRAIN VEHICLE ROUTES ARENA
Iowa County, WI



Date: 6/25/2018
Sources: Clowia County Highway Commission (2018), US Census (2016), Wisconsin SCO (2017), Wisconsin Municipal Clerks (2018)

This map is neither a legally recorded map nor a technical survey and is not intended to be one. SWWRPC is not responsible for any inaccuracies herein contained.



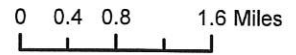


Legend

- ATV-UTV Routes Based on Municipal Ordinance
- ATV-UTV Trail (Cheese Country Trail)
- Local Roads
- County Road
- State Highway
- Federal Highway
- Municipal Boundary
- Iowa County Boundary
- Other County Boundary
- Municipalities without approved ATV/UTV Routes



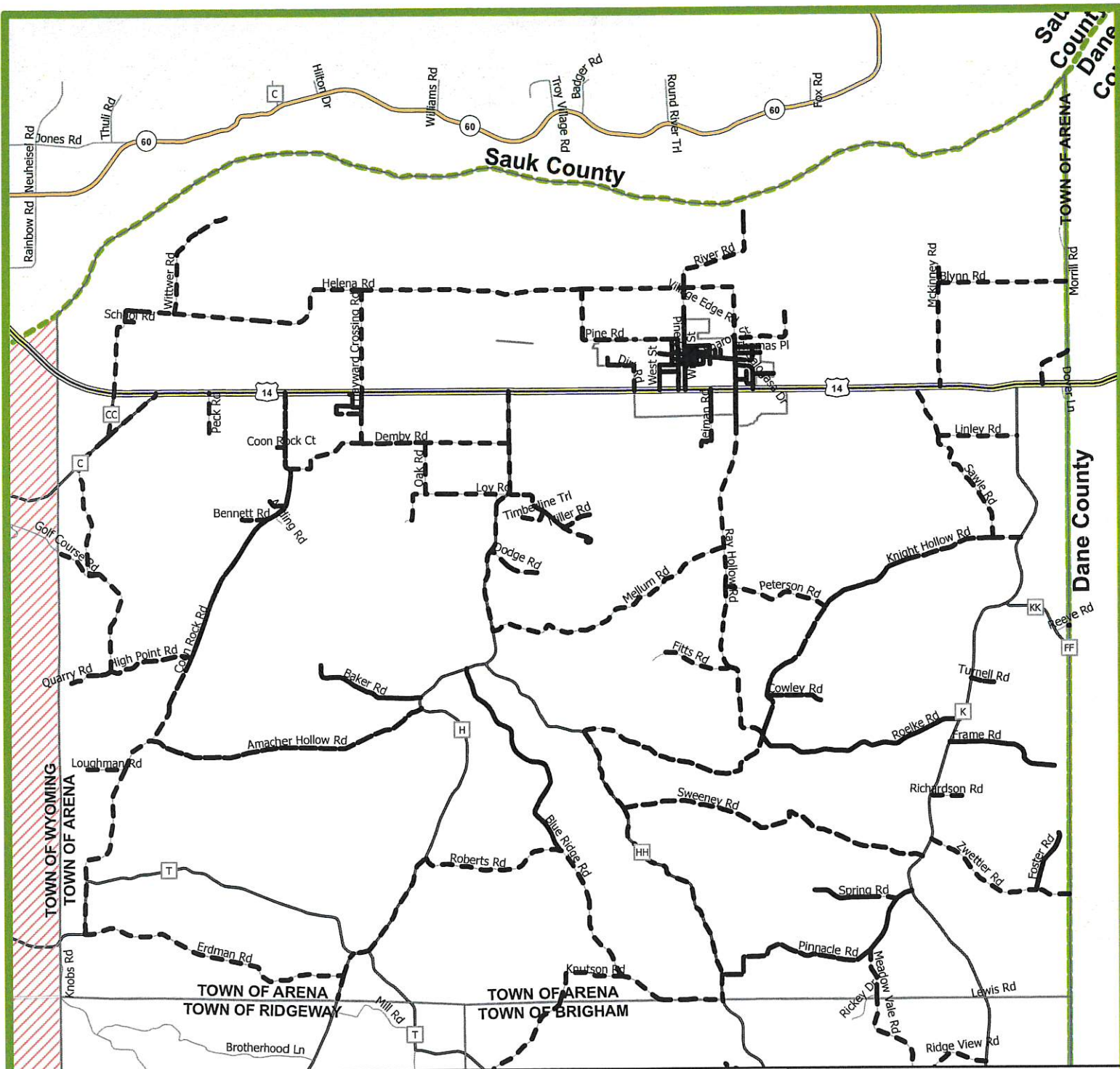
ALL-TERRAIN VEHICLE ROUTES, VILLAGE OF ARENA
Iowa County, WI



Date: 6/25/2018
Sources: Iowa County Highway Commission (2018), US Census (2016), Wisconsin SCO (2017), Wisconsin Municipal Clerks (2018)

This map is neither a legally recorded map nor a technical survey and is not intended to be one. SWWRPC is not responsible for any inaccuracies herein contained.





Legend

- ATV-UTV Routes Based on Municipal Ordinance
- ATV-UTV Trail (Cheese Country Trail)
- Local Roads
- County Road
- State Highway
- Federal Highway
- Municipal Boundary
- Iowa County Boundary
- Other County Boundary
- Municipalities without approved ATV/UTV Routes



ALL-TERRAIN VEHICLE ROUTES, TOWN OF ARENA
Iowa County, WI



0 0.4 0.8 1.6 Miles

Date: 6/25/2018
Sources: Iowa County Highway Commission (2018), US Census (2016), Wisconsin SCO (2017), Wisconsin Municipal Clerks (2018)

This map is neither a legally recorded map nor a technical survey and is not intended to be one. SWWRPC is not responsible for any inaccuracies herein contained.

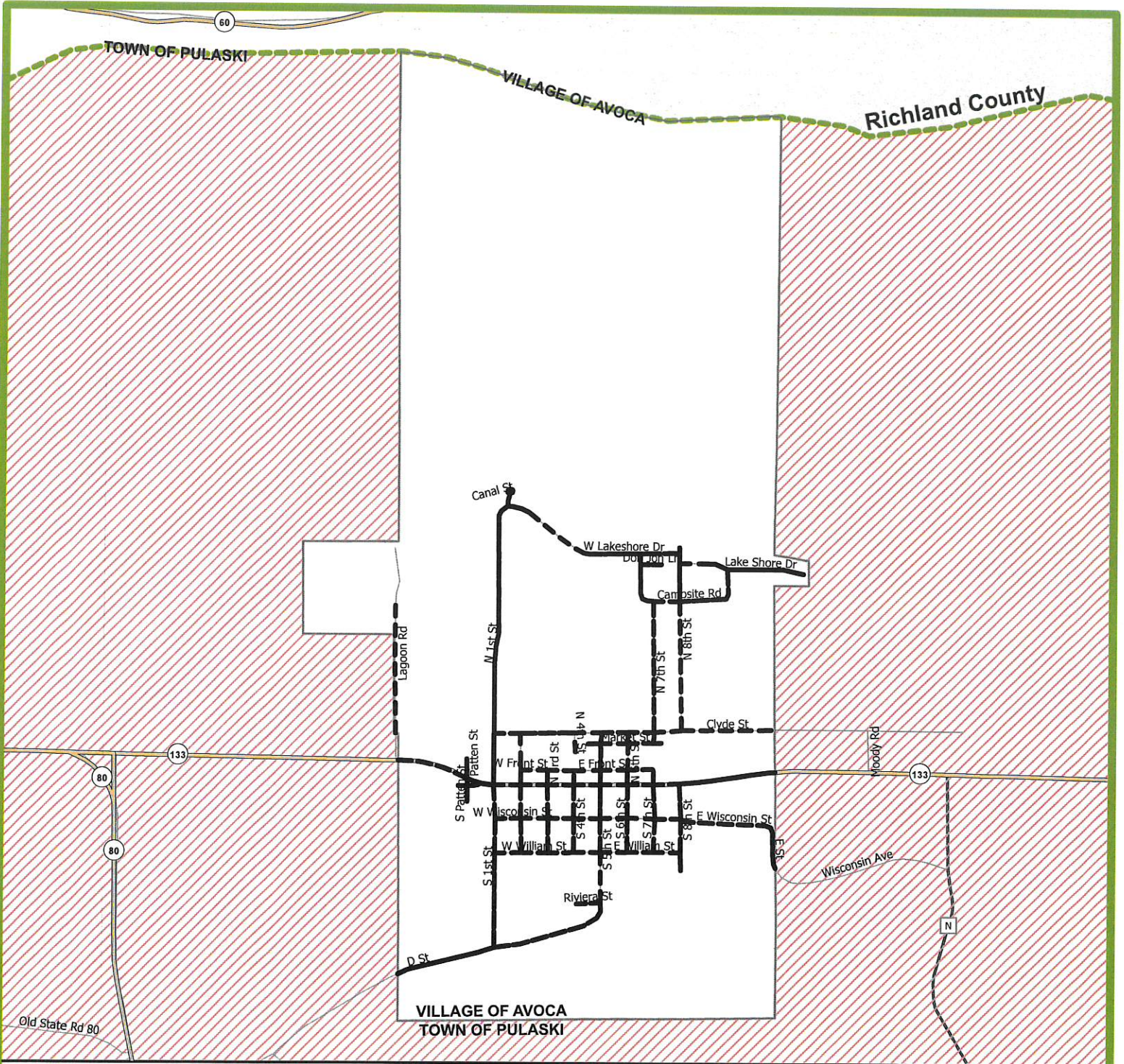


60

TOWN OF PULASKI

VILLAGE OF AVOCA

Richland County



VILLAGE OF AVOCA
TOWN OF PULASKI

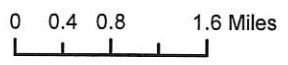
Legend

- ATV-UTV Routes Based on Municipal Ordinance
- ATV-UTV Trail (Cheese Country Trail)
- Local Roads
- County Road
- State Highway
- Federal Highway
- Municipal Boundary
- Iowa County Boundary
- Other County Boundary
- Municipalities without approved ATV/UTV Routes



ALL-TERRAIN VEHICLE ROUTES, VILLAGE OF AVOCA

Iowa County, WI

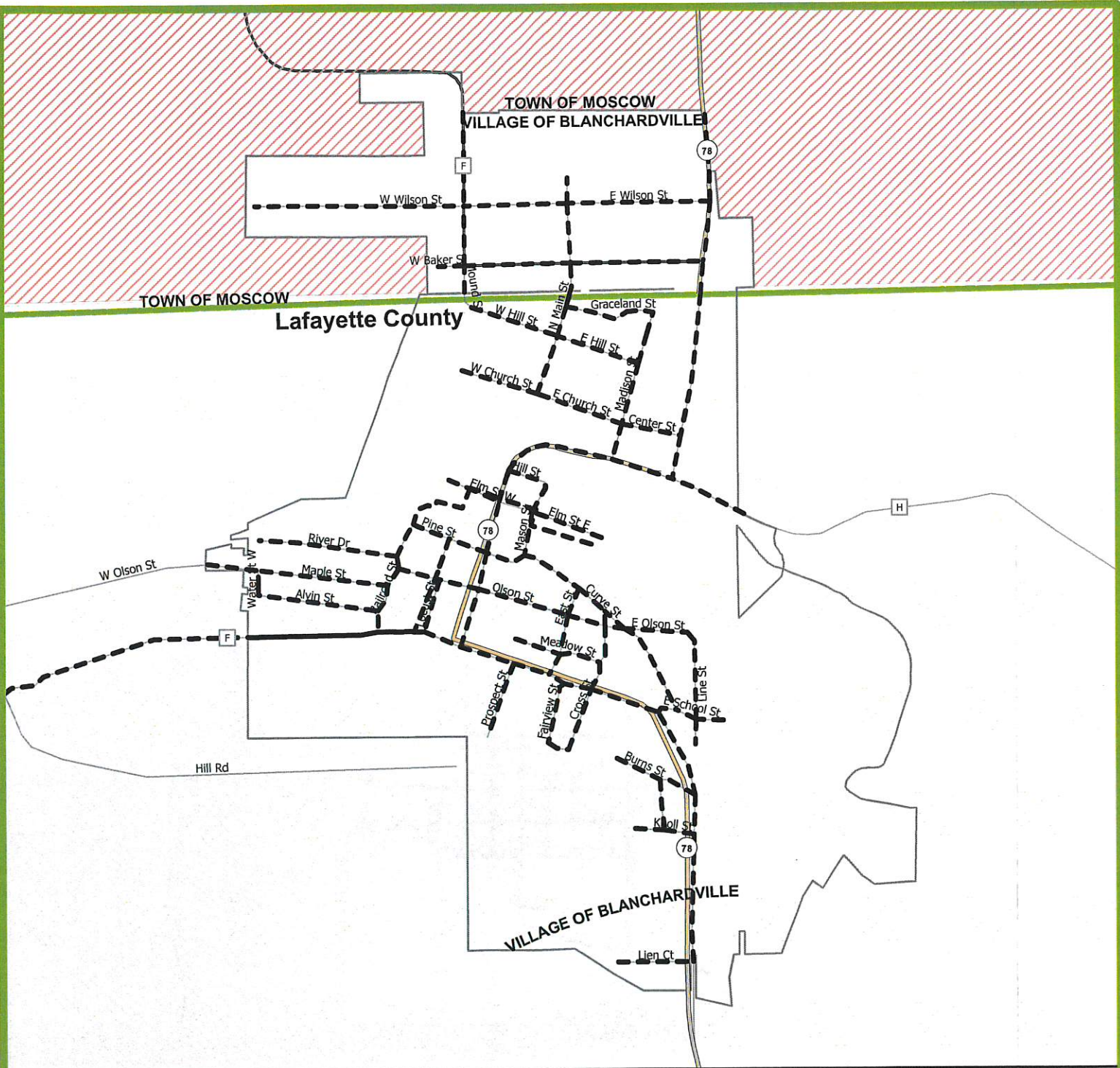


Date: 6/25/2018

Sources: Iowa County Highway Commission (2018), US Census (2016), Wisconsin SCO (2017), Wisconsin Municipal Clerks (2018)

This map is neither a legally recorded map nor a technical survey and is not intended to be one. SWWRPC is not responsible for any inaccuracies herein contained.



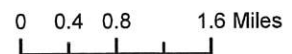


Legend

- ATV-UTV Routes Based on Municipal Ordinance
- ATV-UTV Trail (Cheese Country Trail)
- Local Roads
- County Road
- State Highway
- Federal Highway
- ▭ Municipal Boundary
- ▭ Iowa County Boundary
- ▭ Other County Boundary
- ▨ Municipalities without approved ATV/UTV Routes



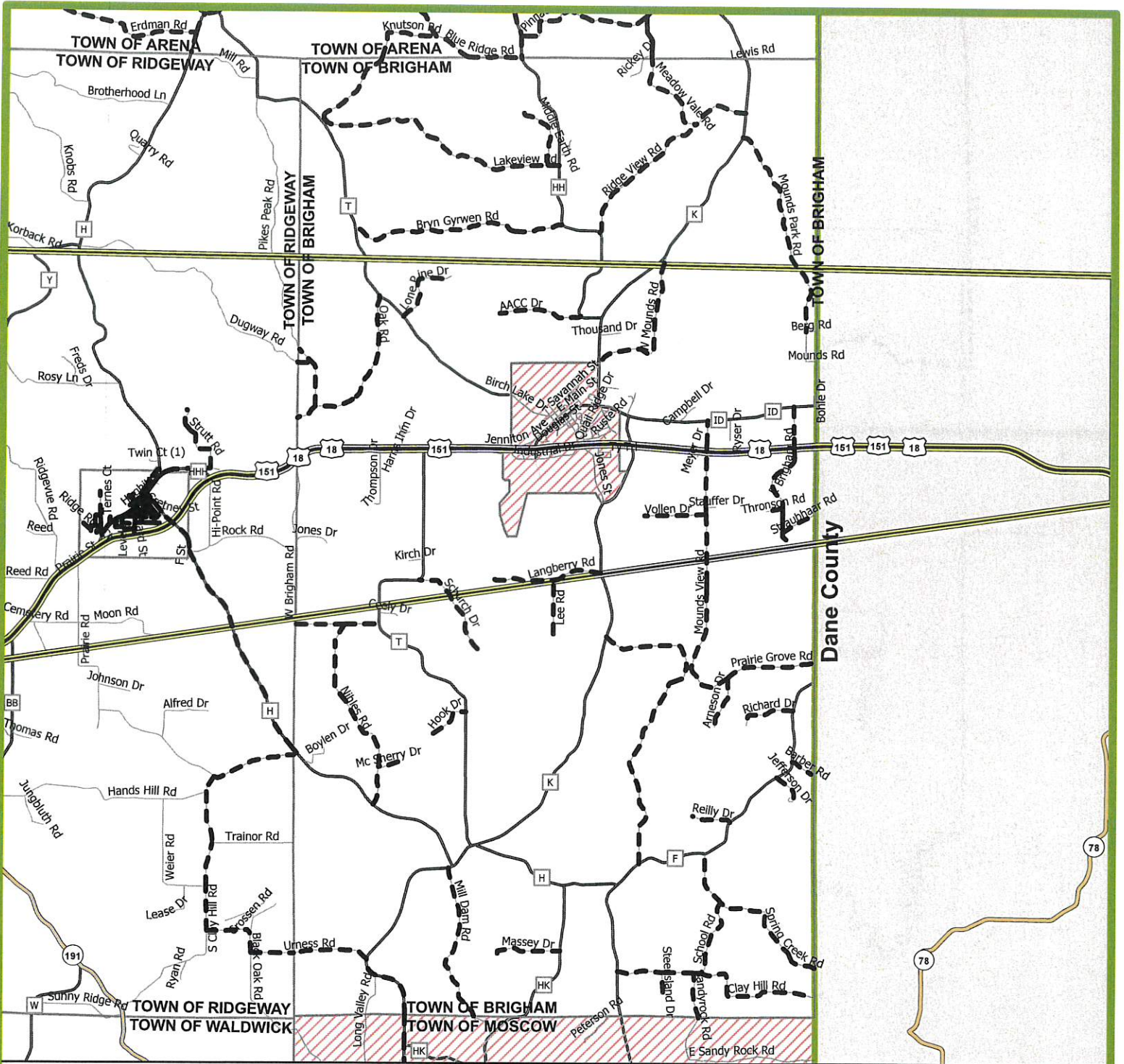
ALL-TERRAIN VEHICLE ROUTES, VILLAGE OF BLANCHARDVILLE Iowa County, WI



Date: 6/25/2018
 Sources: Iowa County Highway Commission (2018),
 US Census (2016), Wisconsin SCO (2017),
 Wisconsin Municipal Clerks (2018)

This map is neither a legally recorded map nor a technical survey and is not intended to be one. SWWRPC is not responsible for any inaccuracies herein contained.



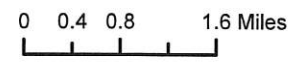


Legend

- ATV-UTV Routes Based on Municipal Ordinance
- ATV-UTV Trail (*Cheese Country Trail*)
- Local Roads
- County Road
- State Highway
- Federal Highway
- Municipal Boundary
- Iowa County Boundary
- Other County Boundary
- Municipalities without approved ATV/UTV Routes



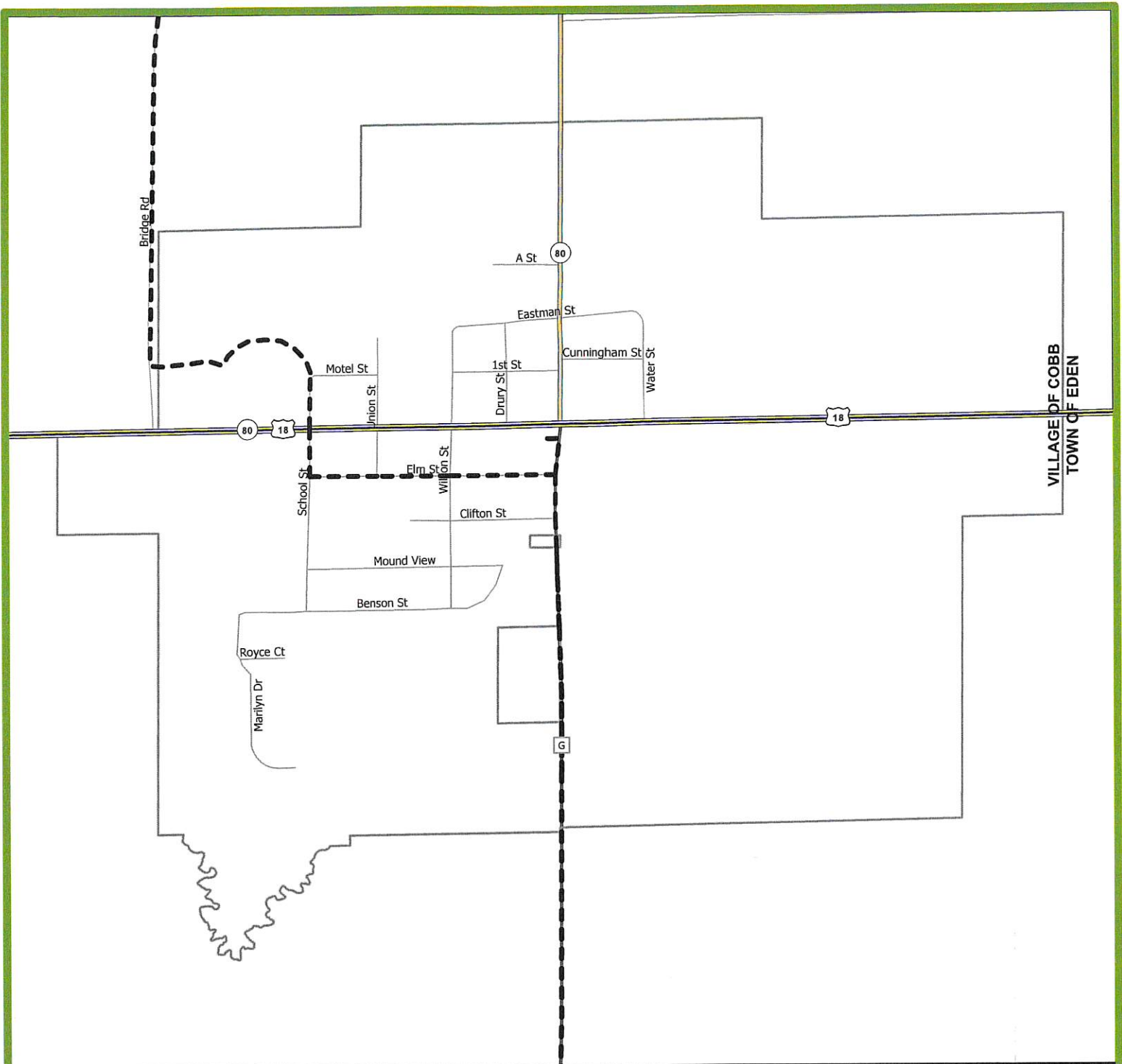
ALL-TERRAIN VEHICLE ROUTES, TOWN OF BRIGHAM Iowa County, WI



Date: 6/25/2018
 Sources: Iowa County Highway Commission (2018),
 US Census (2016), Wisconsin SCO (2017),
 Wisconsin Municipal Clerks (2018)

This map is neither a legally recorded map nor a technical survey and is not intended to be one. SWWRPC is not responsible for any inaccuracies herein contained.





Legend

- ATV-UTV Routes Based on Municipal Ordinance
- ATV-UTV Trail (*Cheese Country Trail*)
- Local Roads
- County Road
- State Highway
- Federal Highway
- Municipal Boundary
- Iowa County Boundary
- Other County Boundary
- Municipalities without approved ATV/UTV Routes



ALL-TERRAIN VEHICLE ROUTES, VILLAGE OF COBB

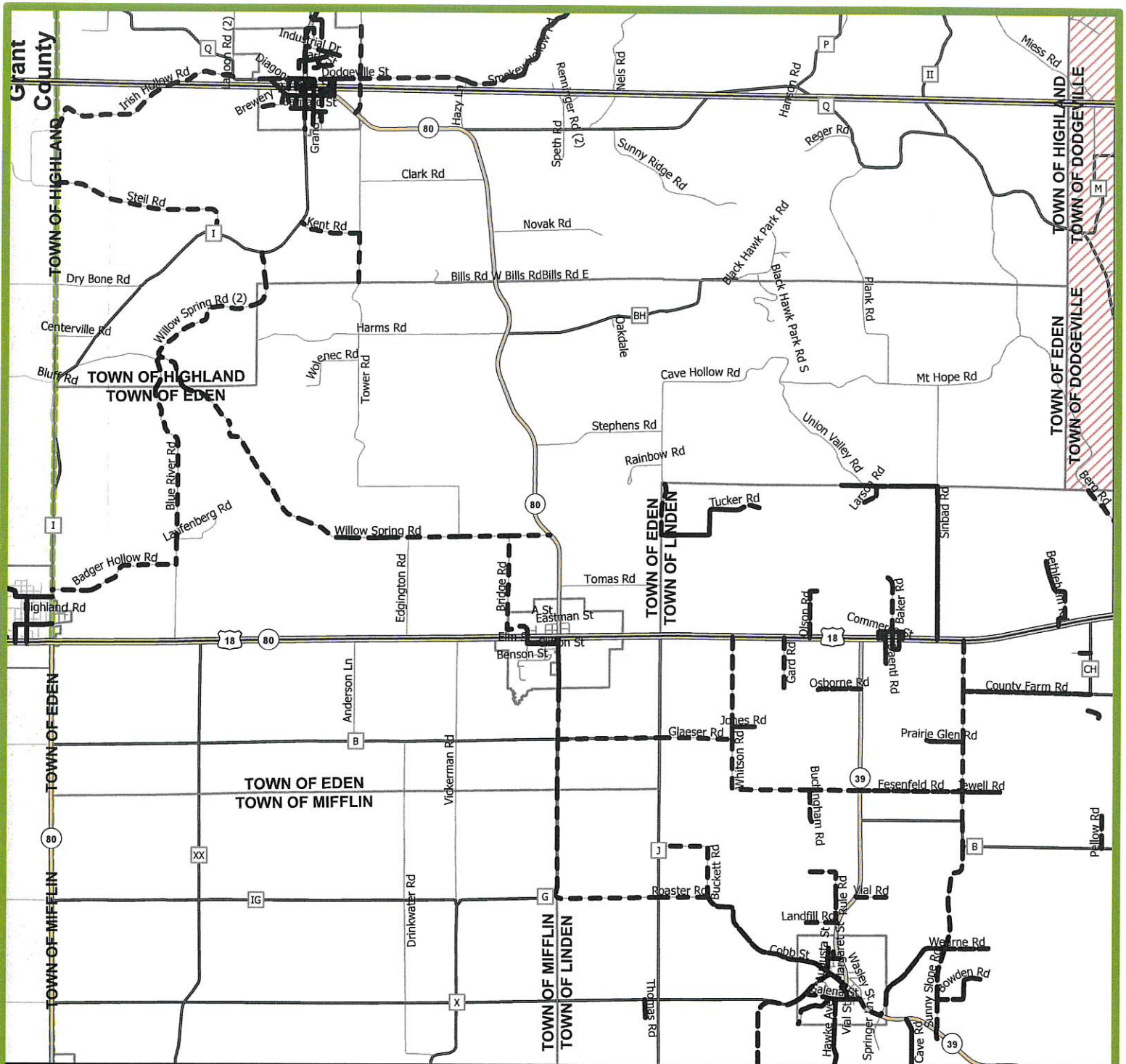
Iowa County, WI



0 0.4 0.8 1.6 Miles

Date: 6/25/2018
 Sources: Iowa County Highway Commission (2018),
 US Census (2016), Wisconsin SCO (2017),
 Wisconsin Municipal Clerks (2018)

This map is neither a legally recorded map nor a technical survey and is not intended to be one. SWWRPC is not responsible for any inaccuracies herein contained.



Legend

- ATV-UTV Routes Based on Municipal Ordinance
- ATV-UTV Trail (Cheese Country Trail)
- Local Roads
- County Road
- State Highway
- Federal Highway
- Municipal Boundary
- Iowa County Boundary
- Other County Boundary
- Municipalities without approved ATV/UTV Routes



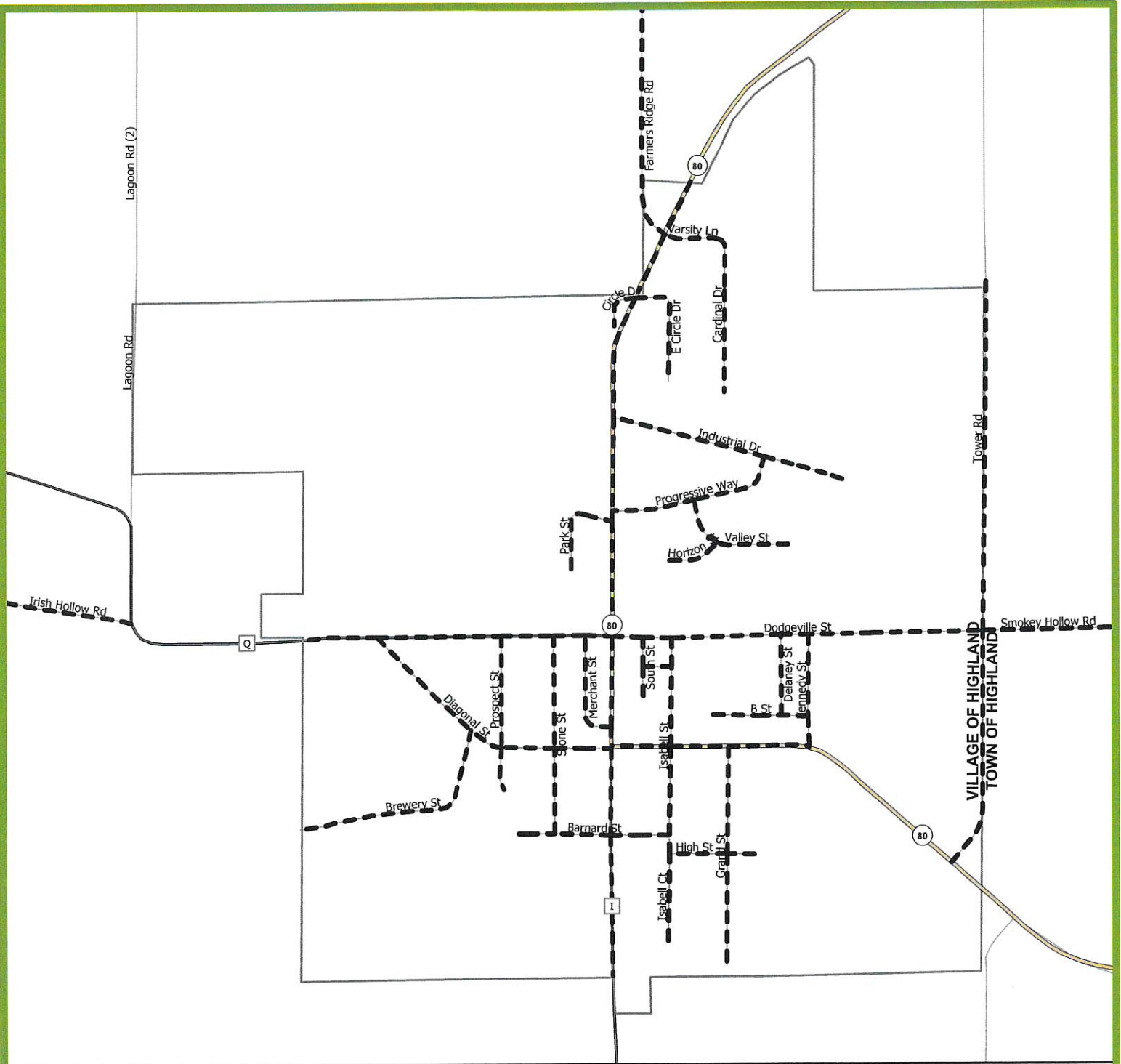
ALL-TERRAIN VEHICLE ROUTES, TOWN OF EDEN Iowa County, WI



0 0.4 0.8 1.6 Miles

Date: 6/25/2018
Sources: Iowa County Highway Commission (2018),
US Census (2016), Wisconsin SCO (2017),
Wisconsin Municipal Clerks (2018)

This map is neither a legally recorded map nor a technical survey and is not intended to be one. SWWRPC is not responsible for any inaccuracies herein contained.



Legend

- ATV-UTV Routes Based on Municipal Ordinance
- ATV-UTV Trail (Cheese Country Trail)
- Local Roads
- County Road
- State Highway
- Federal Highway
- ▭ Municipal Boundary
- ▭ Iowa County Boundary
- ▭ Other County Boundary
- ▭ Municipalities without approved ATV/UTV Routes



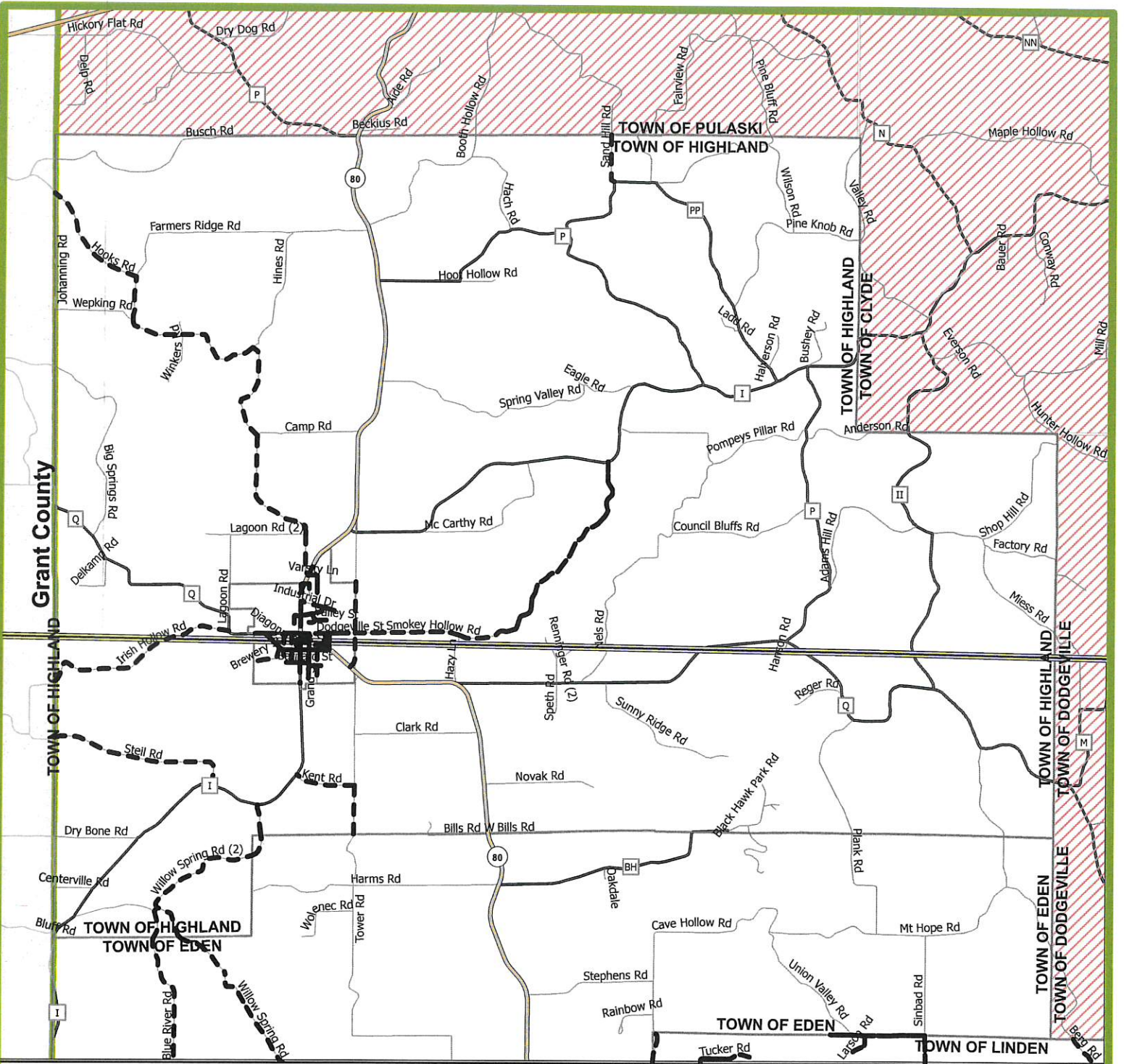
ALL-TERRAIN VEHICLE ROUTES, VILLAGE OF HIGHLAND Iowa County, WI



0 0.4 0.8 1.6 Miles

Date: 6/25/2018
Sources: Iowa County Highway Commission (2018),
US Census (2016), Wisconsin SCO (2017),
Wisconsin Municipal Clerks (2018)

This map is neither a legally recorded map nor a
technical survey and is not intended to be one.
SWWRPC is not responsible for any
inaccuracies herein contained.



Legend

- ATV-UTV Routes Based on Municipal Ordinance
- ATV-UTV Trail (*Cheese Country Trail*)
- Local Roads
- County Road
- State Highway
- Federal Highway
- Municipal Boundary
- Iowa County Boundary
- Other County Boundary
- Municipalities without approved ATV/UTV Routes



**ALL-TERRAIN VEHICLE
ROUTES, TOWN OF
HIGHLAND
Iowa County, WI**

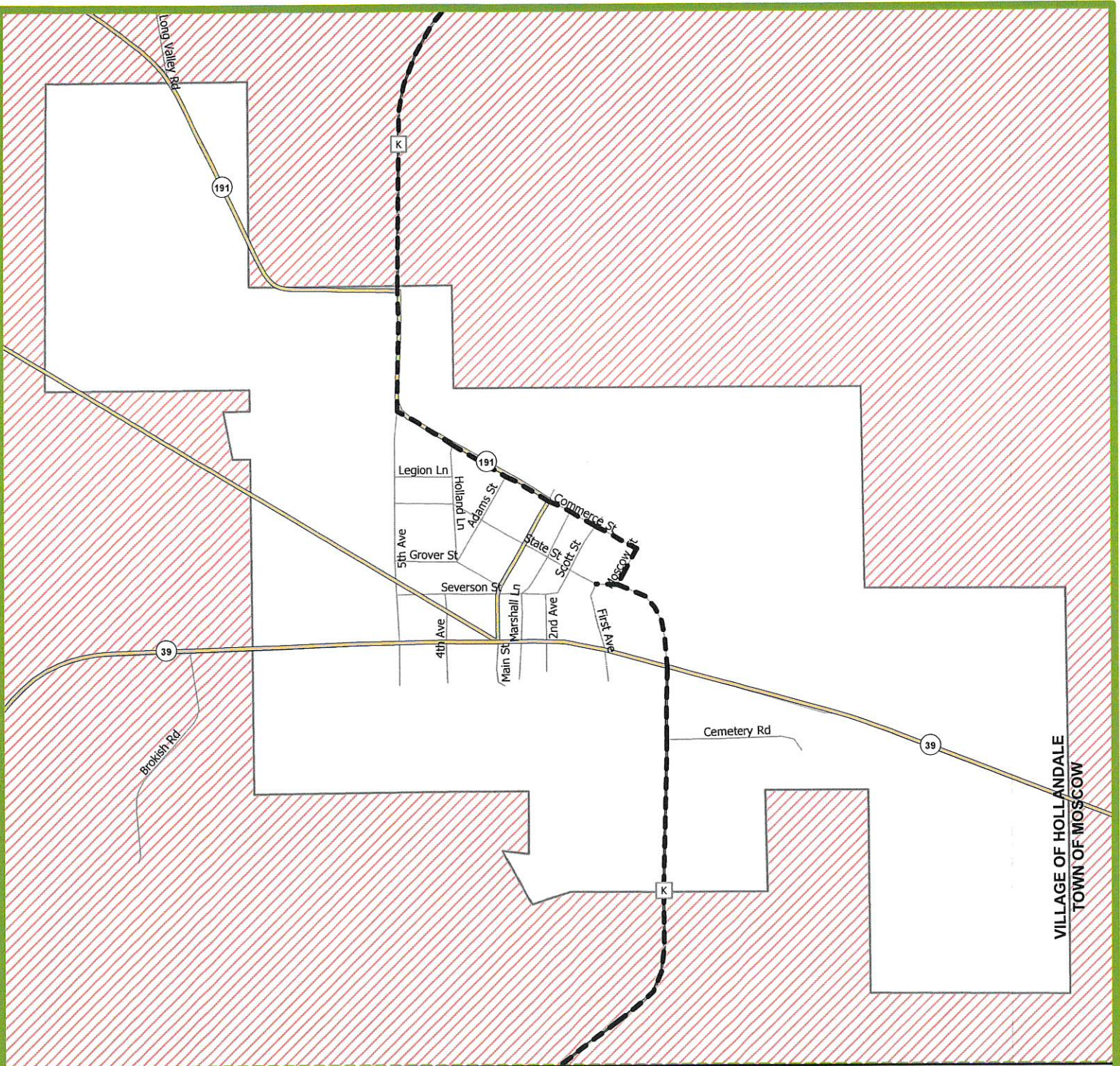


0 0.4 0.8 1.6 Miles

Date: 6/25/2018
Sources: Iowa County Highway Commission (2018),
US Census (2016), Wisconsin SCO (2017),
Wisconsin Municipal Clerks (2018)

This map is neither a legally recorded map nor a
technical survey and is not intended to be one.
SWWRPC is not responsible for any
inaccuracies herein contained.





Legend

- ATV-UTV Routes Based on Municipal Ordinance
- ATV-UTV Trail (*Cheese Country Trail*)
- Local Roads
- County Road
- State Highway
- Federal Highway
- Municipal Boundary
- Iowa County Boundary
- Other County Boundary
- Municipalities without approved ATV/UTV Routes



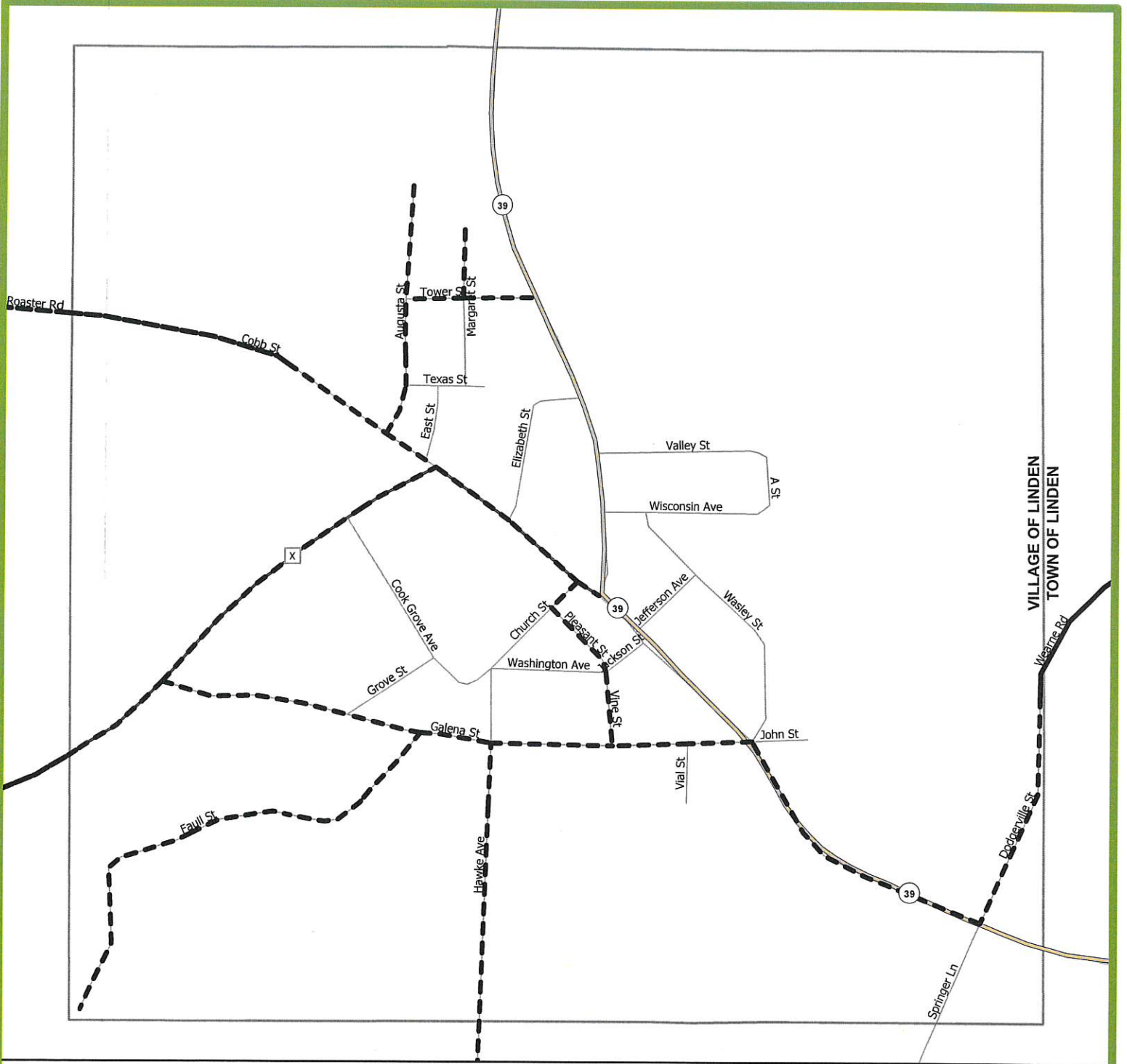
ALL-TERRAIN VEHICLE ROUTES, VILLAGE OF HOLLANDALE Iowa County, WI



0 0.4 0.8 1.6 Miles

Date: 6/25/2018
Sources: Iowa County Highway Commission (2018),
US Census (2016), Wisconsin SCO (2017),
Wisconsin Municipal Clerks (2018)

This map is neither a legally recorded map nor a technical survey and is not intended to be one. SWWRPC is not responsible for any inaccuracies herein contained.



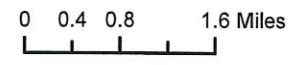
VILLAGE OF LINDEN
TOWN OF LINDEN

Legend

- ATV-UTV Routes Based on Municipal Ordinance
- ATV-UTV Trail (Cheese Country Trail)
- Local Roads
- County Road
- State Highway
- Federal Highway
- Municipal Boundary
- Iowa County Boundary
- Other County Boundary
- Municipalities without approved ATV/UTV Routes



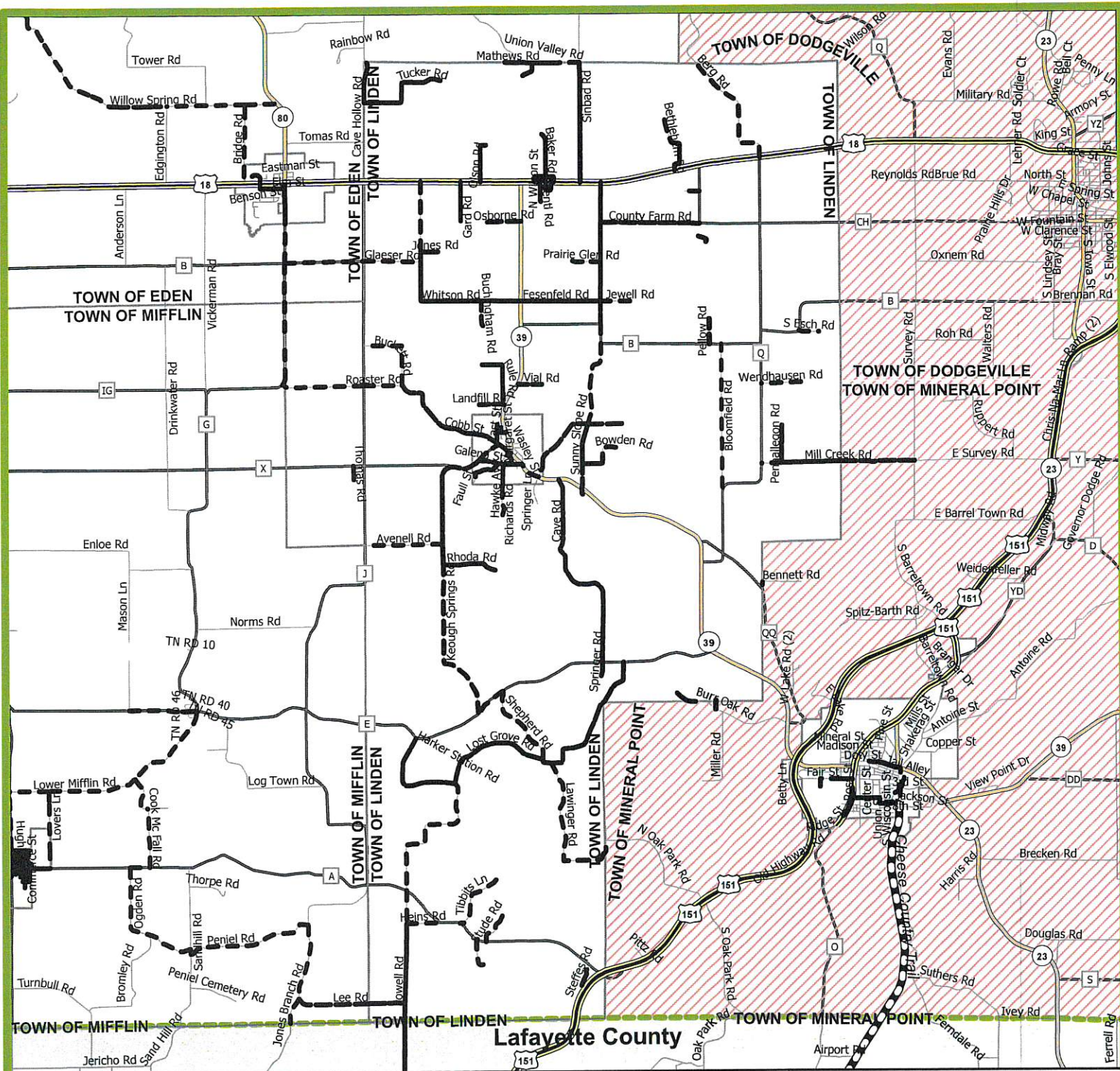
ALL-TERRAIN VEHICLE ROUTES, VILLAGE OF LINDEN Iowa County, WI



Date: 6/25/2018
Sources: Iowa County Highway Commission (2018),
US Census (2016), Wisconsin SCO (2017),
Wisconsin Municipal Clerks (2018)

This map is neither a legally recorded map nor a technical survey and is not intended to be one. SWWRPC is not responsible for any inaccuracies herein contained.



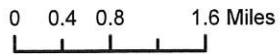


Legend

- ATV-UTV Routes Based on Municipal Ordinance
- ATV-UTV Trail (*Cheese Country Trail*)
- Local Roads
- County Road
- State Highway
- Federal Highway
- Municipal Boundary
- Iowa County Boundary
- Other County Boundary
- // // Municipalities without approved ATV/UTV Routes



ALL-TERRAIN VEHICLE ROUTES, TOWN OF LINDEN
Iowa County, WI



Date: 6/25/2018
Sources: Iowa County Highway Commission (2018), US Census (2016), Wisconsin SCO (2017), Wisconsin Municipal Clerks (2018)

This map is neither a legally recorded map nor a technical survey and is not intended to be one. SWWRPC is not responsible for any inaccuracies herein contained.



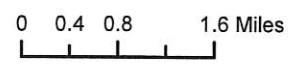


Legend

- ATV-UTV Routes Based on Municipal Ordinance
- ATV-UTV Trail (*Cheese Country Trail*)
- Local Roads
- County Road
- State Highway
- Federal Highway
- Municipal Boundary
- Iowa County Boundary
- Other County Boundary
- Municipalities without approved ATV/UTV Routes



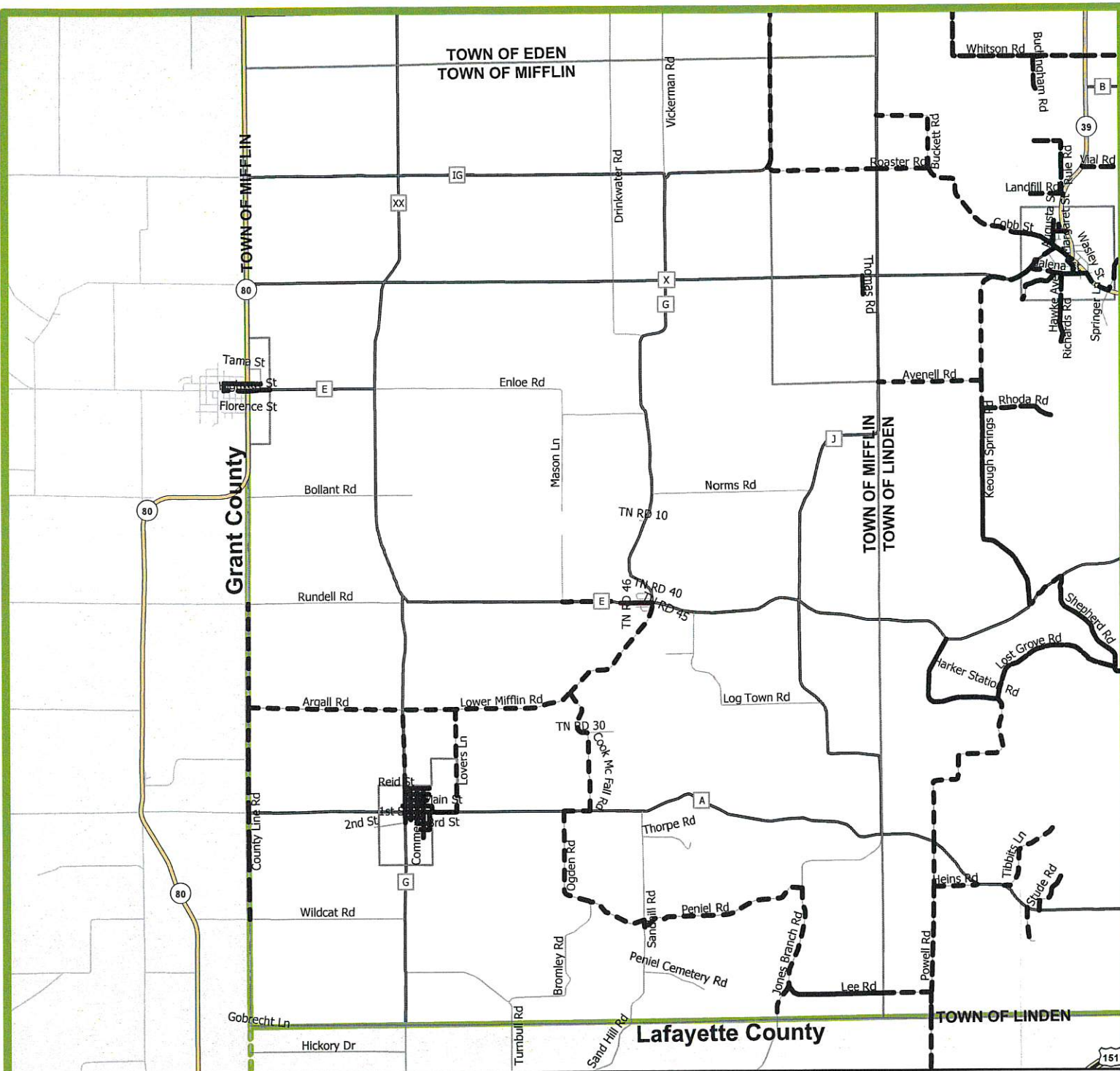
ALL-TERRAIN VEHICLE ROUTES, VILLAGE OF LIVINGSTON Iowa County, WI



Date: 6/25/2018
 Sources: Iowa County Highway Commission (2018),
 US Census (2016), Wisconsin SCO (2017),
 Wisconsin Municipal Clerks (2018)

This map is neither a legally recorded map nor a technical survey and is not intended to be one. SWWRPC is not responsible for any inaccuracies herein contained.



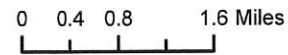


Legend

- ATV-UTV Routes Based on Municipal Ordinance
- ATV-UTV Trail (*Cheese Country Trail*)
- Local Roads
- County Road
- State Highway
- Federal Highway
- Municipal Boundary
- Iowa County Boundary
- Other County Boundary
- // Municipalities without approved ATV/UTV Routes



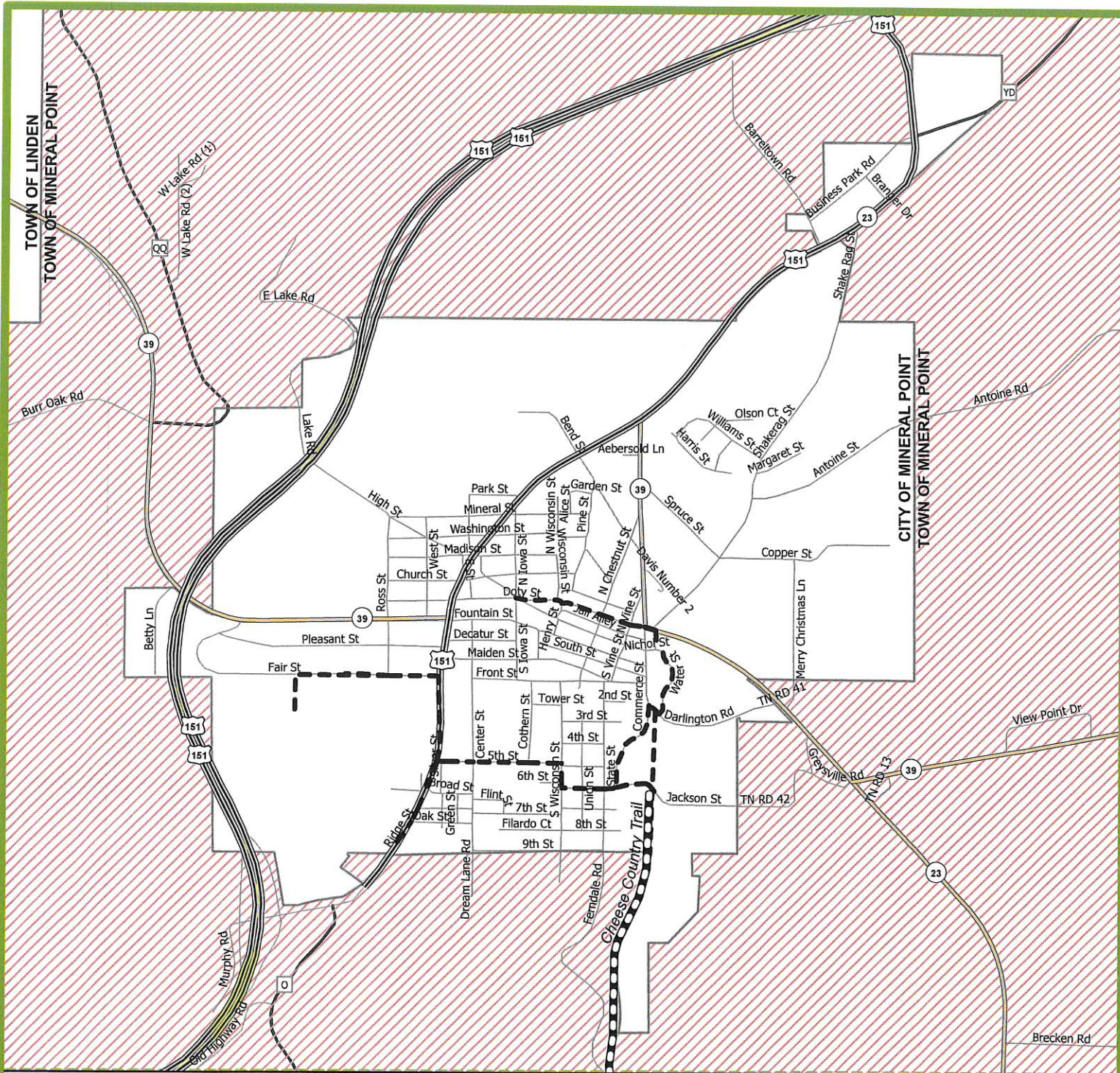
ALL-TERRAIN VEHICLE ROUTES, TOWN OF MIFFLIN
Iowa County, WI



Date: 6/25/2018
Sources: Iowa County Highway Commission (2018), US Census (2016), Wisconsin SCO (2017), Wisconsin Municipal Clerks (2018)

This map is neither a legally recorded map nor a technical survey and is not intended to be one. SWWRPC is not responsible for any inaccuracies herein contained.





Legend

- ATV-UTV Routes Based on Municipal Ordinance
- ATV-UTV Trail (Cheese Country Trail)**
- Local Roads
- County Road
- State Highway
- Federal Highway
- Municipal Boundary
- Iowa County Boundary
- Other County Boundary
- Municipalities without approved ATV/UTV Routes



**ALL-TERRAIN VEHICLE
ROUTES, CITY OF
MINERAL POINT**
Iowa County, WI



0 0.4 0.8 1.6 Miles

Date: 6/25/2018
Sources: Iowa County Highway Commission (2018),
US Census (2016), Wisconsin SCO (2017),
Wisconsin Municipal Clerks (2018)

This map is neither a legally recorded map nor a
technical survey and is not intended to be one.
SWWRPC is not responsible for any
inaccuracies herein contained.





Legend

- ATV-UTV Routes Based on Municipal Ordinance
- ATV-UTV Trail (Cheese Country Trail)
- Local Roads
- County Road
- State Highway
- Federal Highway
- Municipal Boundary
- Iowa County Boundary
- Other County Boundary
- // // // Municipalities without approved ATV/UTV Routes



ALL-TERRAIN VEHICLE ROUTES, VILLAGE OF MONTFORT Iowa County, WI

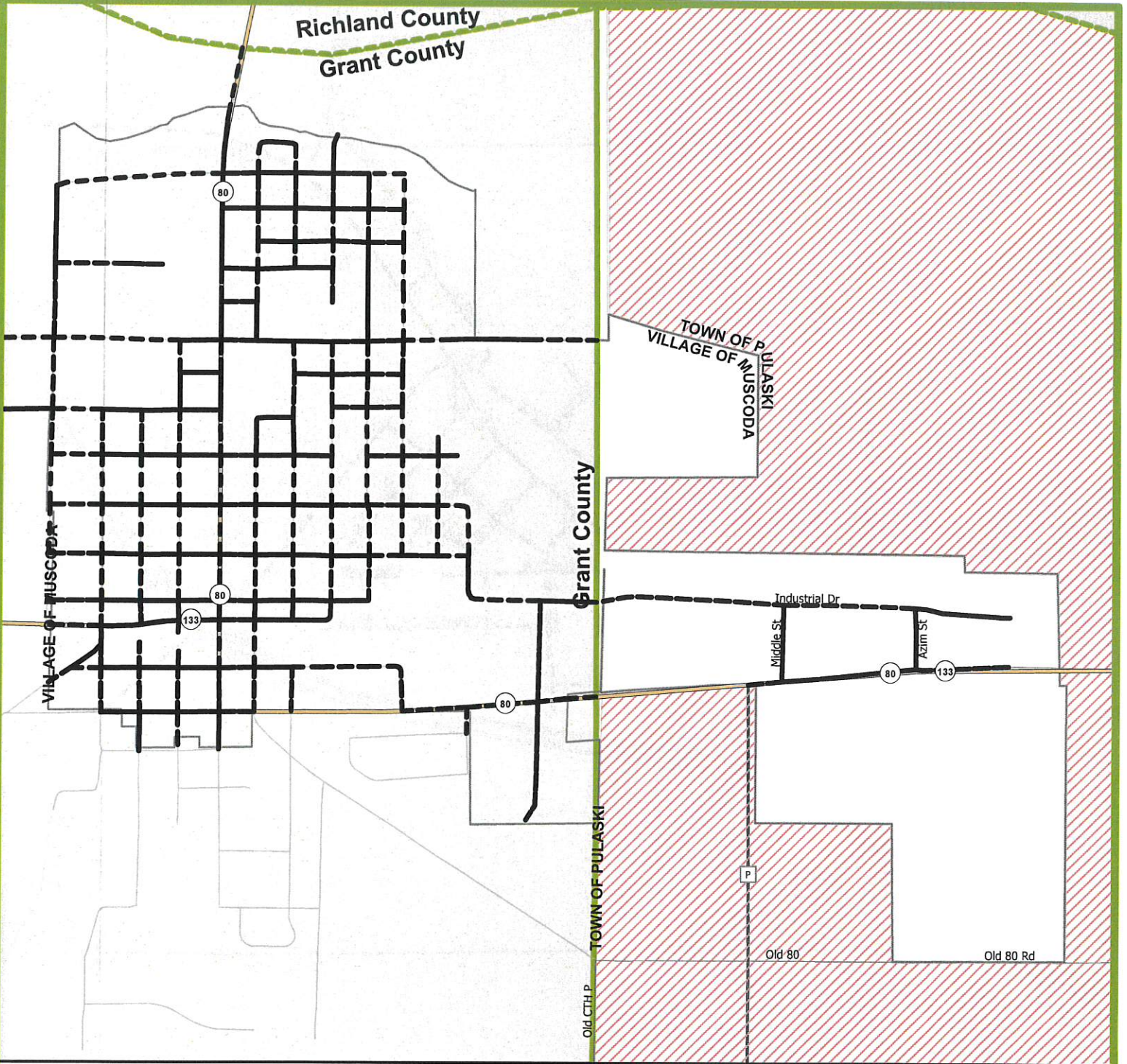


0 0.4 0.8 1.6 Miles

Date: 6/25/2018
Sources: Iowa County Highway Commission (2018),
US Census (2016), Wisconsin SCO (2017),
Wisconsin Municipal Clerks (2018)

This map is neither a legally recorded map nor a technical survey and is not intended to be one.
SWWRPC is not responsible for any inaccuracies herein contained.

Richland County
Grant County



Legend

- ATV-UTV Routes Based on Municipal Ordinance
- ATV-UTV Trail (Cheese Country Trail)**
- Local Roads
- County Road
- State Highway
- Federal Highway
- Municipal Boundary
- Iowa County Boundary
- Other County Boundary
- Municipalities without approved ATV/UTV Routes



**ALL-TERRAIN VEHICLE
ROUTES, VILLAGE OF
MUSCODA**
Iowa County, WI



0 0.4 0.8 1.6 Miles

Date: 6/25/2018
Sources: Iowa County Highway Commission (2018),
US Census (2016), Wisconsin SCO (2017),
Wisconsin Municipal Clerks (2018)

This map is neither a legally recorded map nor a
technical survey and is not intended to be one.
SWWRPC is not responsible for any
inaccuracies herein contained.



Legend

- ATV-UTV Routes Based on Municipal Ordinance
- ATV-UTV Trail (Cheese Country Trail)
- Local Roads
- County Road
- State Highway
- Federal Highway
- Municipal Boundary
- Iowa County Boundary
- Other County Boundary
- Municipalities without approved ATV/UTV Routes



**ALL-TERRAIN VEHICLE
ROUTES, VILLAGE OF
RIDGWAY
Iowa County, WI**

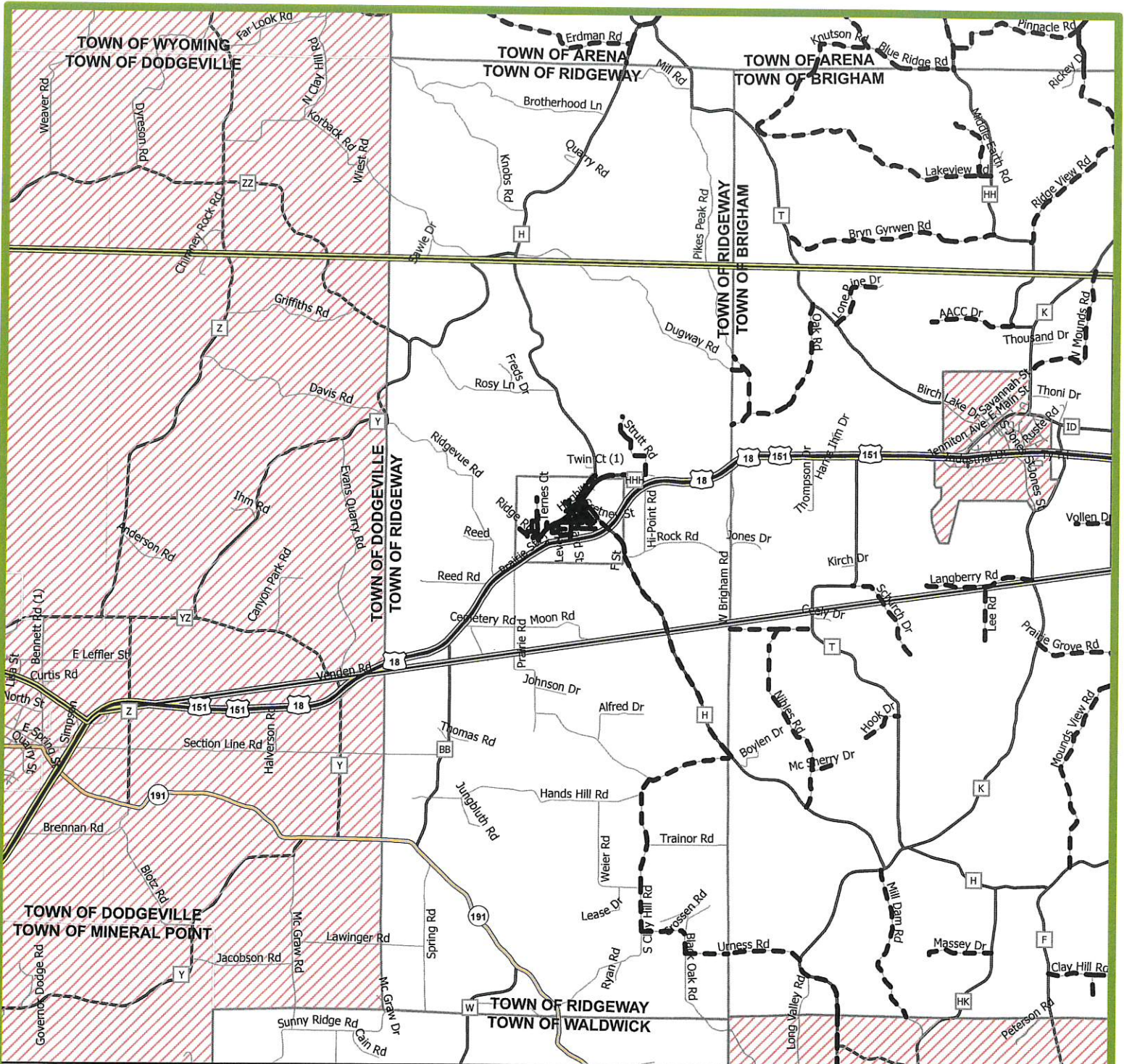


0 0.4 0.8 1.6 Miles

Date: 6/25/2018
Sources: Iowa County Highway Commission (2018),
US Census (2016), Wisconsin SCO (2017),
Wisconsin Municipal Clerks (2018)

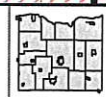
This map is neither a legally recorded map nor a
technical survey and is not intended to be one.
SWWRPC is not responsible for any
inaccuracies herein contained.



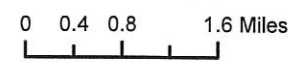


Legend

- ATV-UTV Routes Based on Municipal Ordinance
- ATV-UTV Trail (*Cheese Country Trail*)
- Local Roads
- County Road
- State Highway
- Federal Highway
- Municipal Boundary
- Iowa County Boundary
- Other County Boundary
- Municipalities without approved ATV/UTV Routes



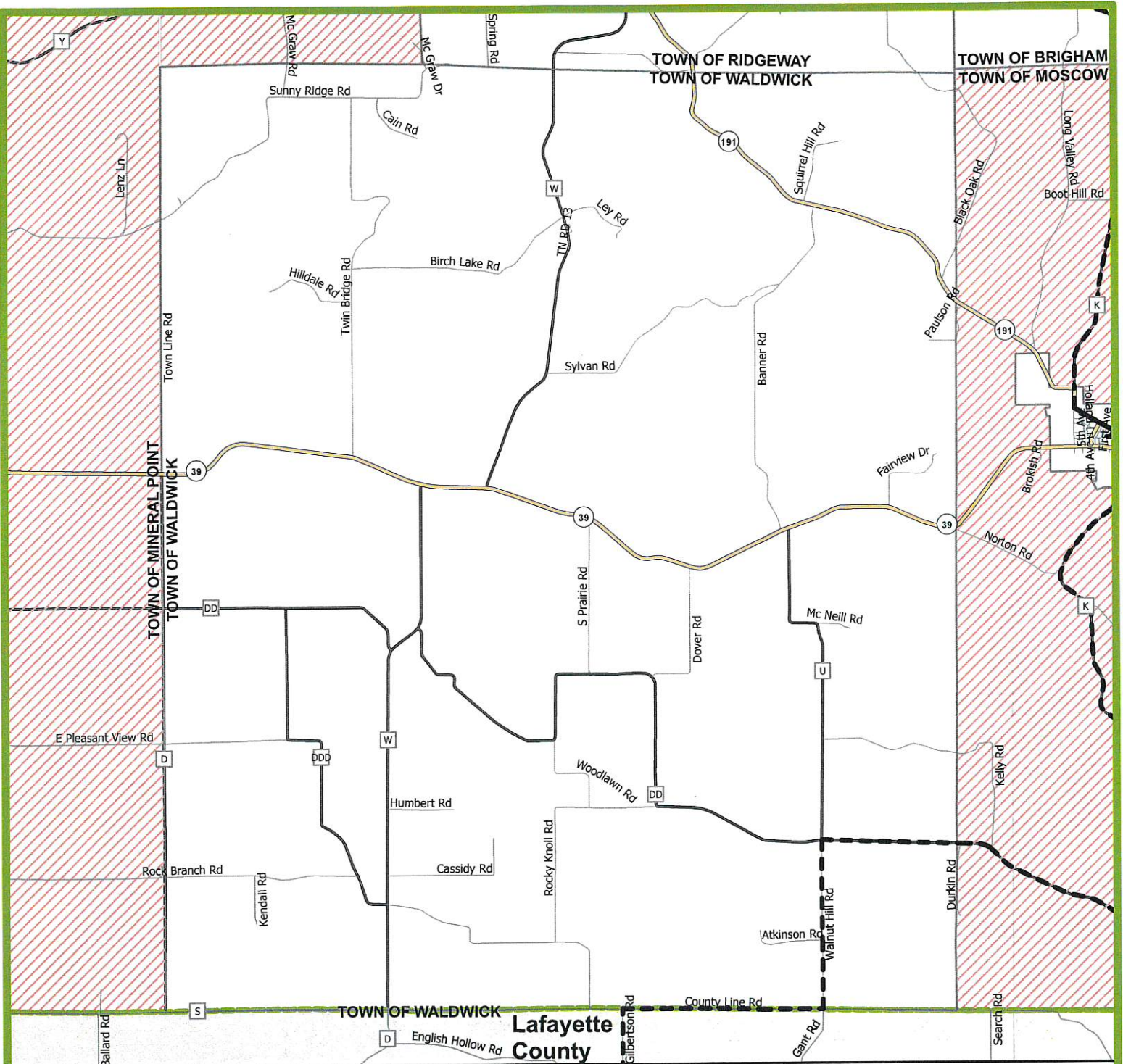
ALL-TERRAIN VEHICLE ROUTES, TOWN OF RIDGEWAY Iowa County, WI



Date: 6/25/2018
 Sources: Iowa County Highway Commission (2018),
 US Census (2016), Wisconsin SCO (2017),
 Wisconsin Municipal Clerks (2018)

This map is neither a legally recorded map nor a technical survey and is not intended to be one. SWWRPC is not responsible for any inaccuracies herein contained.





Legend

- ATV-UTV Routes Based on Municipal Ordinance
- ATV-UTV Trail (*Cheese Country Trail*)
- Local Roads
- County Road
- State Highway
- Federal Highway
- Municipal Boundary
- Iowa County Boundary
- Other County Boundary
- Municipalities without approved ATV/UTV Routes



**ALL-TERRAIN VEHICLE
ROUTES, TOWN OF
WALDWICK**
Iowa County, WI



0 0.4 0.8 1.6 Miles

Date: 6/25/2018
Sources: Iowa County Highway Commission (2018),
US Census (2016), Wisconsin SCO (2017),
Wisconsin Municipal Clerks (2018)

This map is neither a legally recorded map nor a
technical survey and is not intended to be one.
SWWRPC is not responsible for any
inaccuracies herein contained.